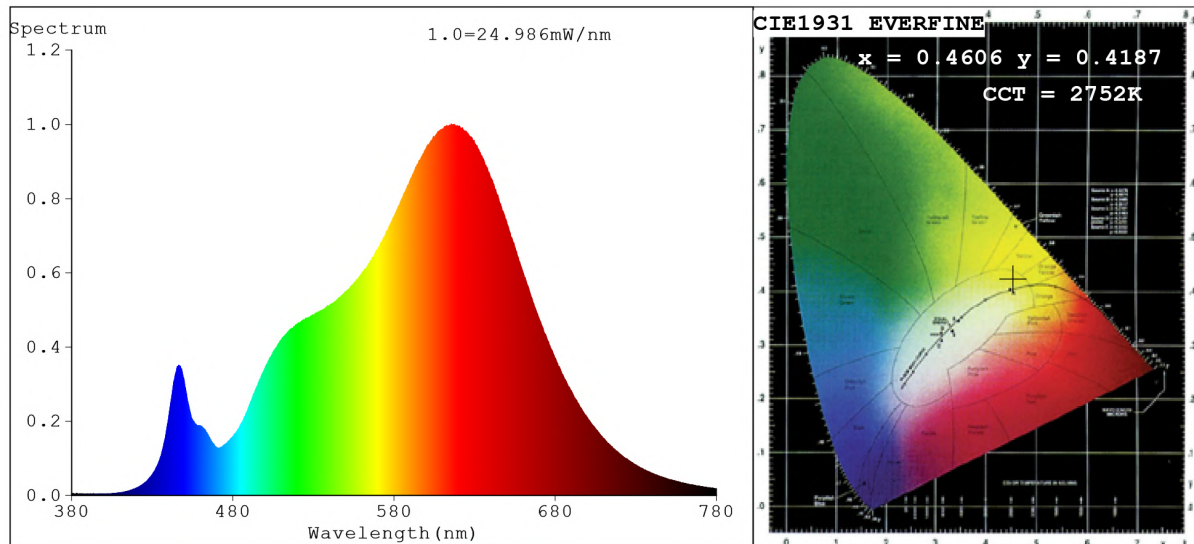


Spectrum Test Report



Color Parameters:

Chromaticity Coordinate: $x=0.4606$ $y=0.4187$ / $u'=0.2594$ $v'=0.5305$
 CCT=2752K (Duv=0.0029) Dominant WL: $\lambda_d = 583.0\text{nm}$ Purity=63.9%
 Ratio: R=25.7% G=72.0% B=2.3%; Peak WL: $\lambda_p = 615.6\text{nm}$ FWHM=132.7nm
 Render Index: Ra=90.9 CRI=87.8 TM30: Rf=90 Rg=97
 R1 =90 R2 =95 R3 =99 R4 =93 R5 =91 R6 =96 R7 =89
 R8 =73 R9 =40 R10=89 R11=96 R12=86 R13=91 R14=100 R15=83

Photo Parameters:

Flux = 1150 lm Eff. : 104.06 lm/W Fe = 3.707 W Scotopic: 1472.5 S/P: 1.2806

Electrical parameters:

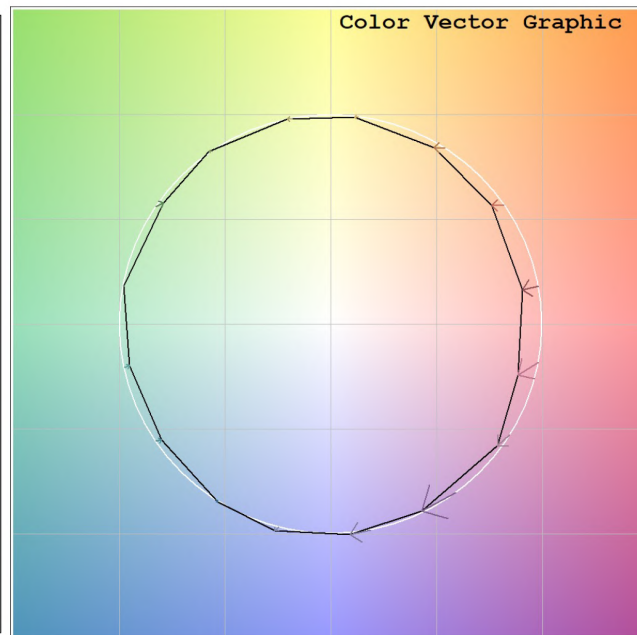
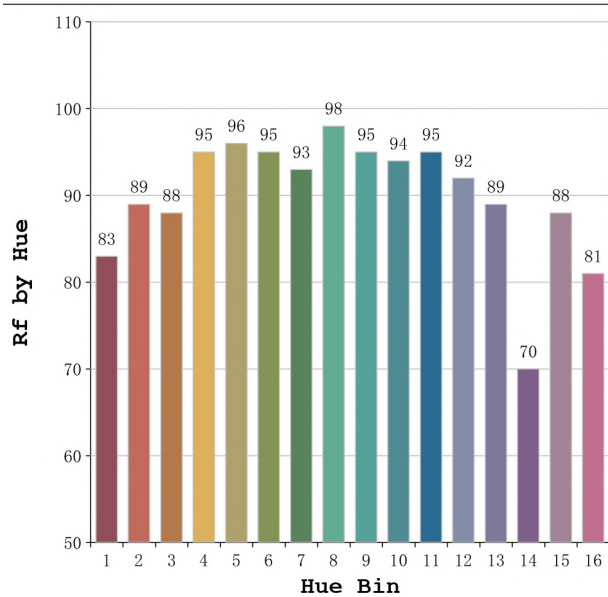
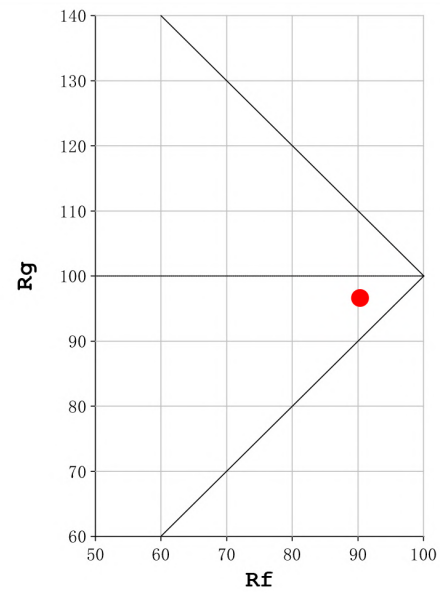
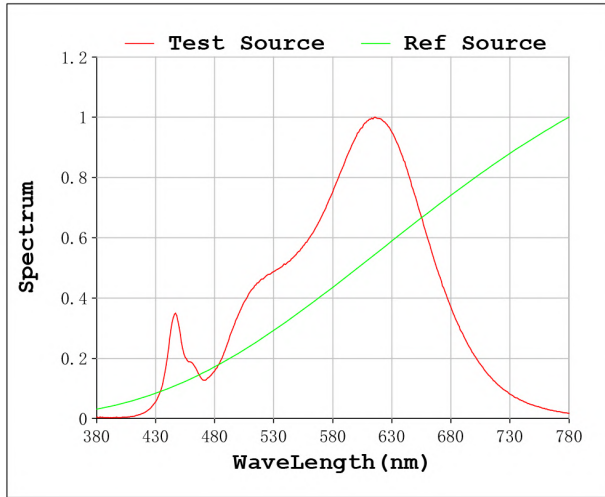
V = 11.998 V I = 0.9210 A P = 11.05 W PF = 1.000

Status: Integral T = 1099 ms Ip = 53068 (81%)

Model: Ecoled COB 8mm 2800K
 Tester: Sergio Carneros
 Temperature: 27Deg
 Manufacturer: Luz Negra S.L

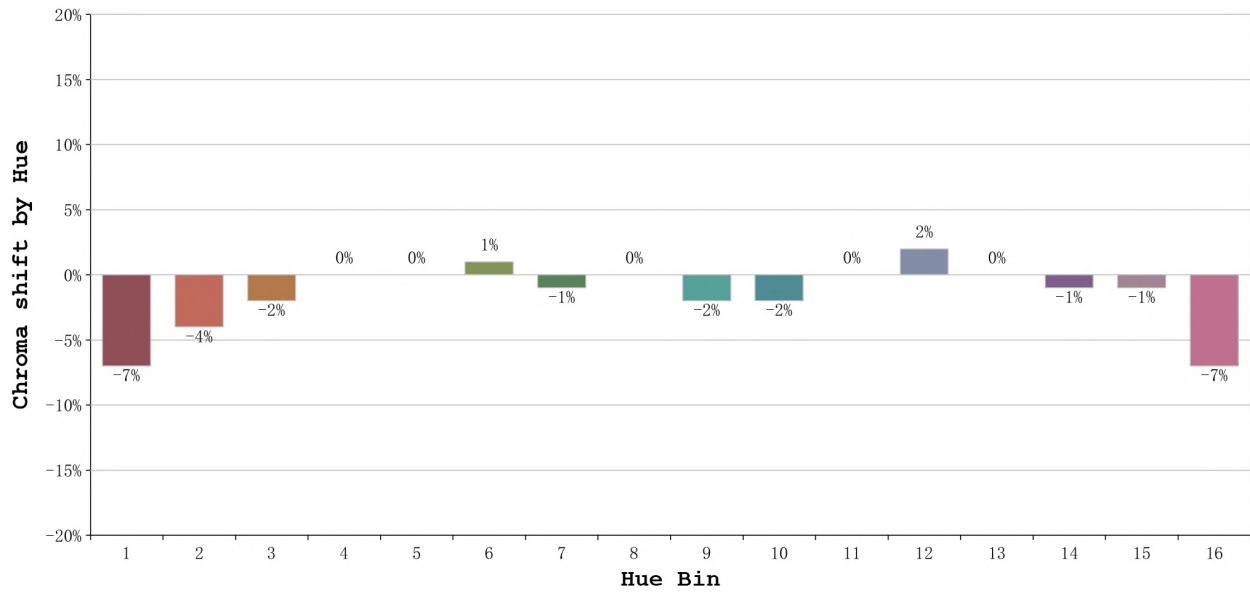
Number: 31.146
 Date: 2024-01-15 14:55:23
 Humidity: 40%
 Remarks: tira flexible de 100cm

Rf: 90 **CCT: 2752 K** **u': 0.2594**
Rg: 97 **Duv: 0.0029** **v': 0.5305**



Model:Ecoled COB 8mm 2800K
 Tester:Sergio Carneros
 Temperature:27Deg
 Manufacturer:Luz Negra S.L

Number: 31.146
 Date:2024-01-15 14:55:23
 Humidity:40%
 Remarks:tira flexible de 100cm



			Graphic shift(%)	
Hue Bin	Hue Angle	Rf	Chroma	Hue
1	0.0° - 22.5°	83	-7	0
2	22.5° - 45.0°	89	-4	3
3	45.0° - 67.5°	88	-2	5
4	67.5° - 90.0°	95	0	2
5	90.0° - 112.5°	96	0	2
6	112.5° - 135.0°	95	1	1
7	135.0° - 157.5°	93	-1	-2
8	157.5° - 180.0°	98	0	0
9	180.0° - 202.5°	95	-2	0
10	202.5° - 225.0°	94	-2	1
11	225.0° - 247.5°	95	0	1
12	247.5° - 270.0°	92	2	0
13	270.0° - 292.5°	89	0	-9
14	292.5° - 315.0°	70	-1	-17
15	315.0° - 337.5°	88	-1	-7
16	337.5° - 360.0°	81	-7	-7

Model:Ecoled COB 8mm 2800K
 Tester:Sergio Carneros
 Temperature:27Deg
 Manufacturer:Luz Negra S.L

Number: 31.146
 Date:2024-01-15 14:55:23
 Humidity:40%
 Remarks:tira flexible de 100cm